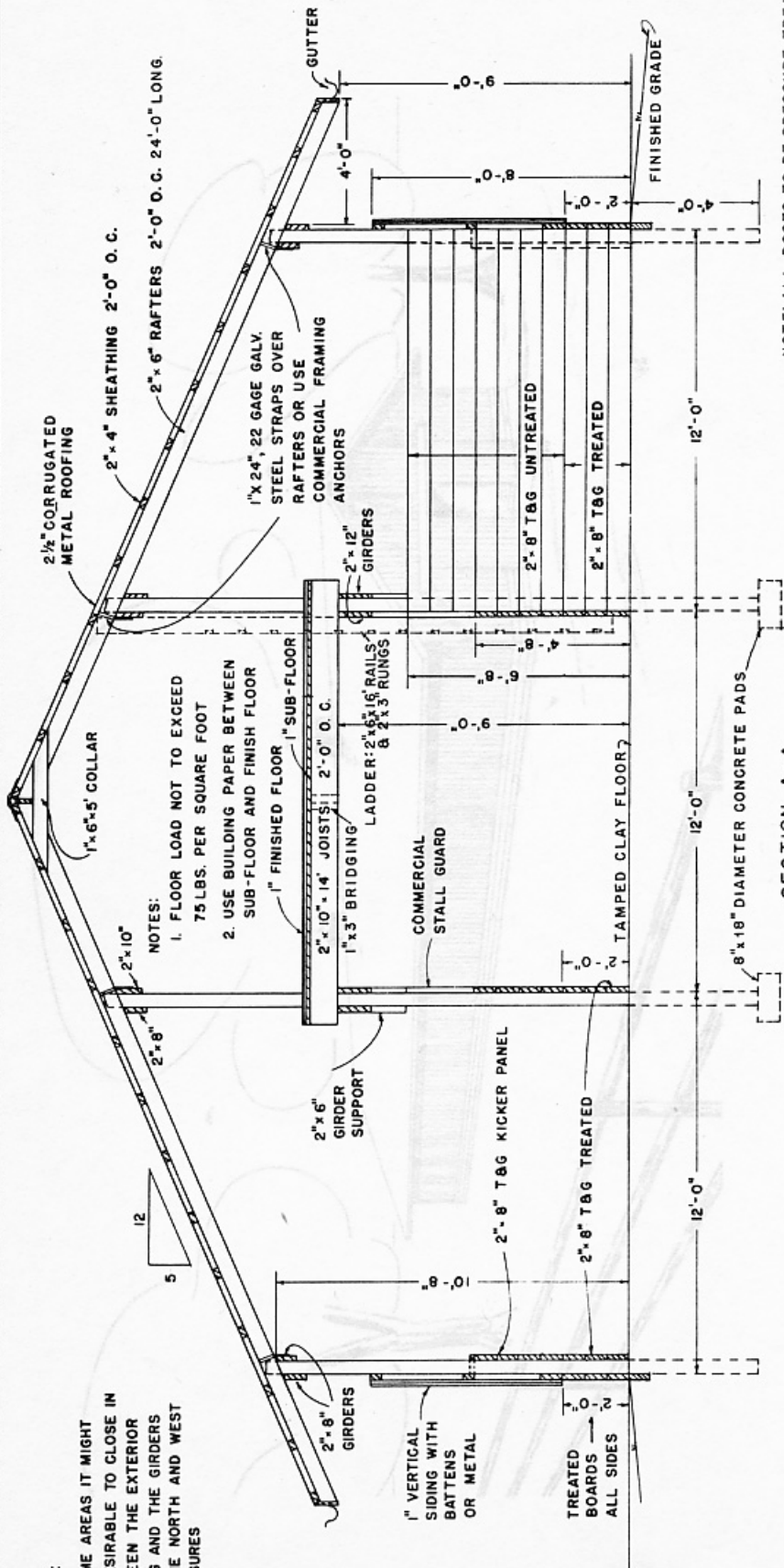


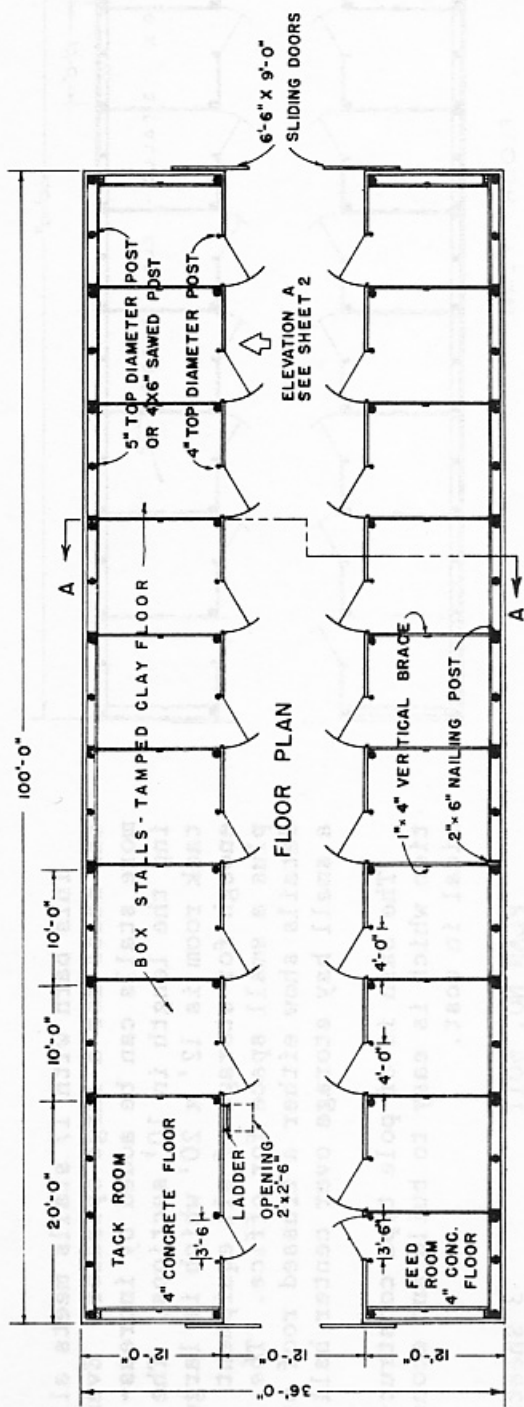
NOTE 1:

IN SOME AREAS IT MIGHT BE DESIRABLE TO CLOSE IN BETWEEN THE EXTERIOR SIDING AND THE GIRDERS ON THE NORTH AND WEST EXPOSURES

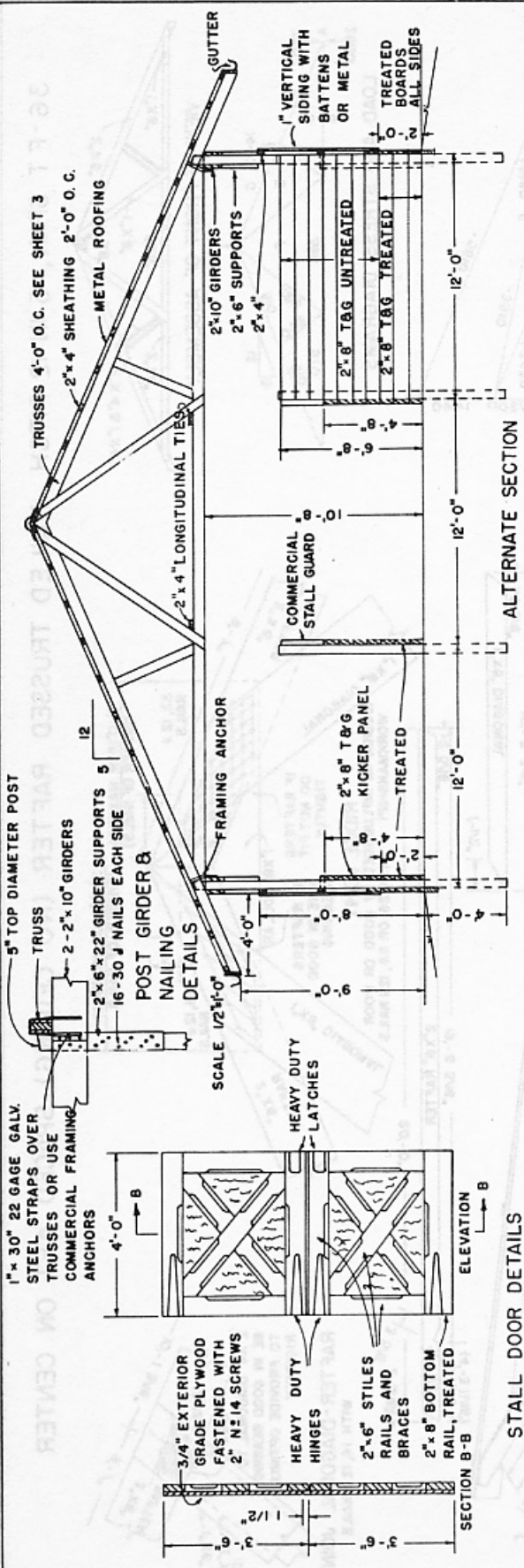


SECTION A-A

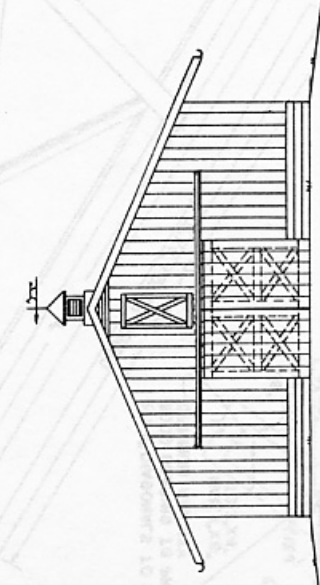
NOTE: ALL POSTS TO BE PRESSURE-TREATED WITH PRESERVATIVE TO A RETENTION OF 8 POUNDS PER CUBIC FOOT.



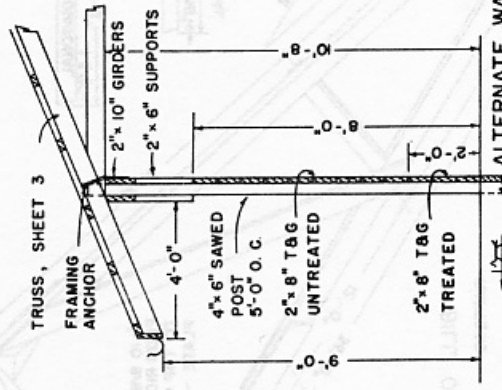
FLOOR PLAN



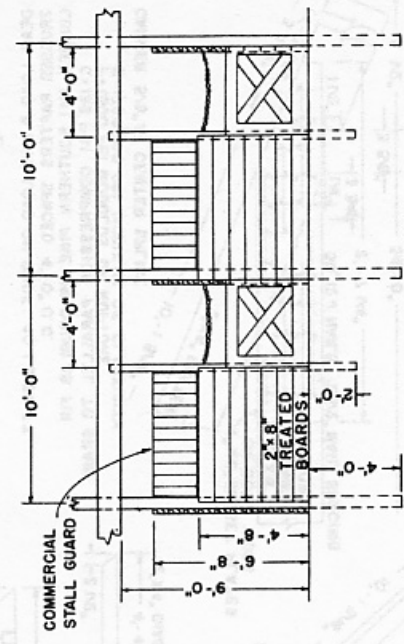
STALL DOOR DETAILS



END ELEVATION



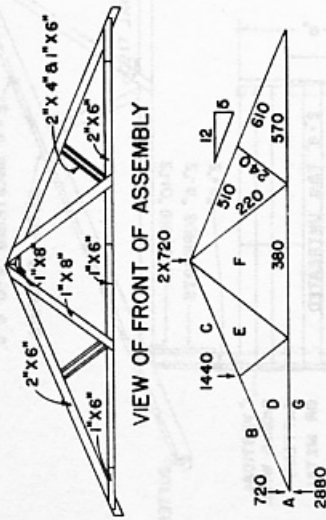
ALTERNATE WALL DETAIL



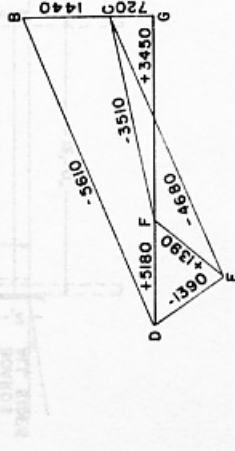
ALTERNATE STALL DETAIL
ELEVATION A

SEE NOTE ON SHEET 1.

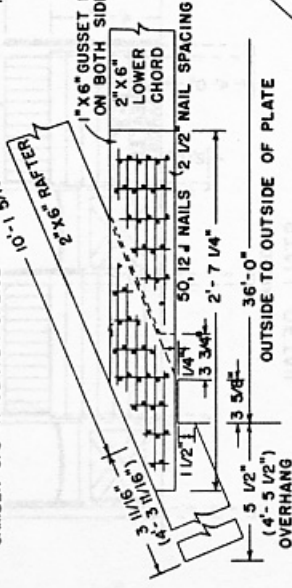
36-F-T SPAN, 5 IN 12 PITCH, NAILED TRUSSED RAFTER (NO CEILING) SPACED 4FT. ON CENTER



VIEW OF FRONT OF ASSEMBLY

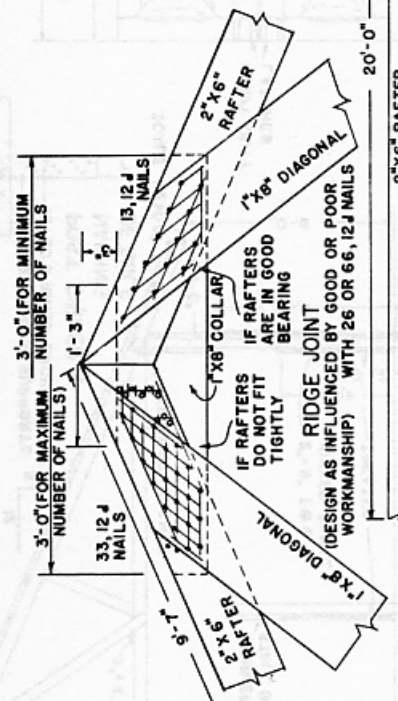


DEAD LOAD & LIVE LOAD ON ROOF: 40 LB/50. FT.
 TRUSSED RAFTERS SPACED 4'-0" O.C.
 LUMBER NFI SOUTHERN PINE OR DOUGLAS FIR
 C=135 PSI COMPRESSION PARALLEL TO GRAIN
 F=1500 PSI MODULUS OF RUPTURE
 E=1760000 PSI MODULUS OF ELASTICITY
 CAMBER 5/8" AT CENTER SPLICE

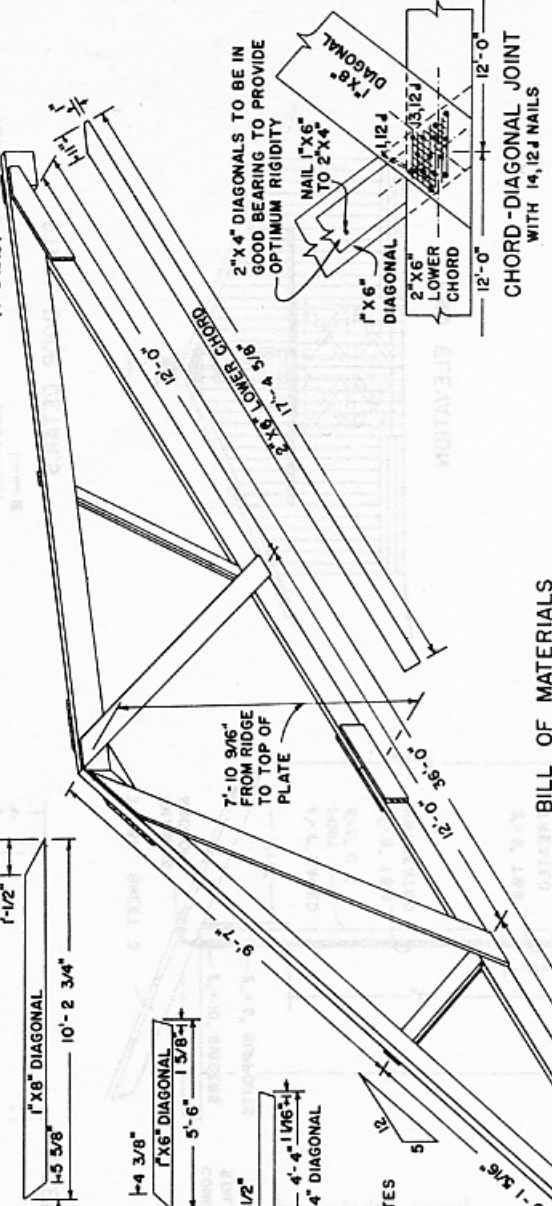


HEEL JOINT WITH 50, 12 J NAILS

NOTES:
 USE HELICALLY THREADED NAILS FOR PERMANENTLY TIGHT JOINTS THROUGHOUT STRUCTURE
 USE HARDENED NAILS IN DRY SOUTHERN PINE
 DRIVE ALL NAILS FROM FRONT EXCEPT THOSE SHOWN AS (O)
 USE TEMPLATES FOR LOCATING ALL NAILS TO ASSURE MAXIMUM EFFICIENCY AND EFFECTIVENESS



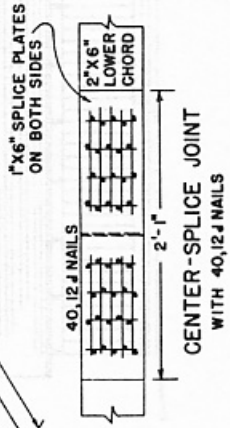
RIDGE JOINT (DESIGN AS INFLUENCED BY GOOD OR POOR WORKMANSHIP) WITH 26 OR 66, 12 J NAILS



FRONT VIEW OF ASSEMBLY

BILL OF MATERIALS

RAFTERS	2 PCS.	2" X 6" X 20'-0" (24'-0")
LOWER CHORD	2 PCS.	2" X 6" X 17'-4 5/8"
DIAGONALS	2 PCS.	2" X 4" X 4'-4"
	2 PCS.	1" X 6" X 5'-6"
SPLICES	2 PCS.	1" X 8" X 10'-2 3/4"
GUSSETS	4 PCS.	1" X 6" X 2'-1"
	1 PC.	1" X 6" X 2'-7 1/4"
NAILS		1" X 8" X 3'-0" BRIGHT
	230-270 PCS.	12 J 3 1/4" X 0.148" (44 LBS.)
OR NAILS		HARDENED 3 1/4" X 0.135" (37 LBS.)



CENTER-SPLICE JOINT WITH 40, 12 J NAILS